



**NUCLEAR  
SHIELDS**



**NUCLEAR  
MEDICINE**

**ALL CONFIGURATIONS**

# **SYRINGE SHIELDS**

[WWW.NUCLEAR-SHIELDS.COM](http://WWW.NUCLEAR-SHIELDS.COM)

# TUNGSTEN SYRINGE SHIELDS

Our tungsten syringe shields designed to ensure optimized attenuation and reduce hand and finger doses. Designed for 1-10 ml syringes. Most syringe shield volumes are available in multiple internal dimensions for different syringe manufacturers. The inside is finished white so that the ml indicator on the syringe is clearly readable. The outside of each syringe shield comes in 5 colors, each color representing the ml syringe version. The body of the tungsten syringe shields is finished with anodized aluminum for easy cleaning and decontamination.



TUNGSTEN THICKNESS	LEAD GLASS THICKNESS	LEAD GLASS DENSITY	ACRYL THICKNESS
2mm	10mm	5,2 g/cm <sup>3</sup>	n/a

TUNGSTEN THICKNESS	LEAD GLASS THICKNESS	LEAD GLASS DENSITY	ACRYL THICKNESS
2mm	10mm	5,2 g/cm <sup>3</sup>	n/a

CLIP-LOCK PRODUCT CODE	CLIP-LOCK VOLUME	CLIP-LOCK INSIDE DIMENSIONS	CLIP-LOCK WEIGHT	CLIP-LOCK COLORS
SS2CL1-1	1 ml	Ø8,8x72mm	0,13KG	Green
SS2CL1-2	1 ml	Ø8,8x76mm	0,15KG	Green
SS2CL1-3	1 ml	Ø11,5x76mm	0,16KG	Green
SS2CL2-4	2 ml	Ø11,5x53mm	0,12KG	Grey/Silver
SS2CL2-5	2 ml	Ø11,5x60mm	0,13KG	Grey/Silver
SS2CL3-6	3 ml	Ø11,5x65mm	0,14KG	Yellow/Gold
SS2CL3-7	3 ml	Ø11,5x69mm	0,16KG	Yellow/Gold
SS2CL5-8	5 ml	Ø15,4x61mm	0,18KG	Blue
SS2CL5-9	5 ml	Ø15,4x65mm	0,19KG	Blue
SS2CL5-10	5 ml	Ø15,4x68mm	0,20KG	Blue
SS2CL10-11	10 ml	Ø18,2x75mm	0,22KG	Red
SS2CL10-12	10 ml	Ø18,2x85mm	0,25KG	Red

BIG-SCREW PRODUCT CODE	BIG-SCREW VOLUME	BIG-SCREW INSIDE DIMENSIONS	BIG-SCREW WEIGHT	BIG-SCREW COLORS
SS2BS1-1	1 ml	Ø8,8x72mm	0,13KG	Green
SS2BS1-2	1 ml	Ø8,8x76mm	0,15KG	Green
SS2BS1-3	1 ml	Ø11,5x76mm	0,15KG	Green
SS2BS2-4	2 ml	Ø11,5x53mm	0,12KG	Grey/Silver
SS2BS2-5	2 ml	Ø11,5x60mm	0,13KG	Grey/Silver
SS2BS3-6	3 ml	Ø11,5x65mm	0,14KG	Yellow/Gold
SS2BS3-7	3 ml	Ø11,5x69mm	0,16KG	Yellow/Gold
SS2BS5-8	5 ml	Ø15,4x61mm	0,16KG	Blue
SS2BS5-9	5 ml	Ø15,4x65mm	0,18KG	Blue
SS2BS5-10	5 ml	Ø15,4x68mm	0,19KG	Blue
SS2BS10-11	10 ml	Ø18,2x75mm	0,22KG	Red
SS2BS10-12	10 ml	Ø18,2x85mm	0,25KG	Red
SS2BS20-13	20 ml	Ø22,4x96mm	0,30KG	Orange
SS2BS30-14	30 ml	Ø26x109mm	0,61KG	
SS2BS50-15	50 ml	Ø31,4x120mm	0,63KG	



## LEAD GLASS

# SYRINGE SHIELDS

Our syringe shields with lead glass viewing window for optimal 360° visibility of the syringe. Designed for 1-10 ml syringes. Most syringe shield volumes are available in multiple internal dimensions for different syringe manufacturers. The clip-lock mechanism will make sure that the syringe is held in place. The anodized aluminum end cap is lined with 2 mm tungsten shielding on the inside to also provide shielding at the clip-lock mechanism, where the lead glass is not able to reach. This makes sure that you are optimally protected. The lead glass is fitted with a rubber lead glass protection ring. Available in 5 colors, each color representing the ml. syringe version. The body of the tungsten shielded body is finished with anodized aluminum for easy cleaning and decontamination.



TUNGSTEN THICKNESS	LEAD GLASS THICKNESS	LEAD GLASS DENSITY	ACRYL THICKNESS
2mm	7mm	5,2 g/cm <sup>3</sup>	n/a

LEAD GLASS PRODUCT CODE	LEAD GLASS VOLUME	LEAD GLASS INSIDE DIMENSIONS	LEAD GLASS WEIGHT	LEAD GLASS COLORS
SS2LGCL1-1	1 ml	Ø8.8x72mm	0,15KG	Green
SS2LGCL1-2	1 ml	Ø8.8x76mm	0,16KG	Green
SS2LGCL1-3	1 ml	Ø11.5x76mm	0,19KG	Green
SS2LGCL2-4	2 ml	Ø11.5x53mm	0,14KG	Grey/Silver
SS2LGCL2-5	2 ml	Ø11.5x60mm	0,15KG	Grey/Silver
SS2LGCL3-6	3 ml	Ø11.5x65 mm	0,16KG	Yellow/Gold
SS2LGCL3-7	3 ml	Ø11.5x69 mm	0,17KG	Yellow/Gold
SS2LGCL5-8	5 ml	Ø15.4x61 mm	0,19KG	Blue
SS2LGCL5-9	5 ml	Ø15.4x65 mm	0,20KG	Blue
SS2LGCL5-10	5 ml	Ø15.4x68 mm	0,21KG	Blue
SS2LGCL10-11	10 ml	Ø18.2x75 mm	0,25KG	Red
SS2LGCL10-12	10 ml	Ø18.2x85 mm	0,28KG	Red

# PET SYRINGE SHIELDS

Our tungsten syringe shields for PET with 8mm tungsten and our convenient Big-Screw locking mechanism. Designed for 1-10 ml syringes. Most syringe shield volumes are available in multiple internal dimensions for different syringe manufacturers. Available in Big-Screw mechanism. The inside is finished white so that the ml indicator on the syringe is clearly readable. The outside of each syringe shield comes in 5 colors, each color representing the ml syringe version. The body of the tungsten syringe shields is finished with anodized aluminum for easy cleaning and decontamination.

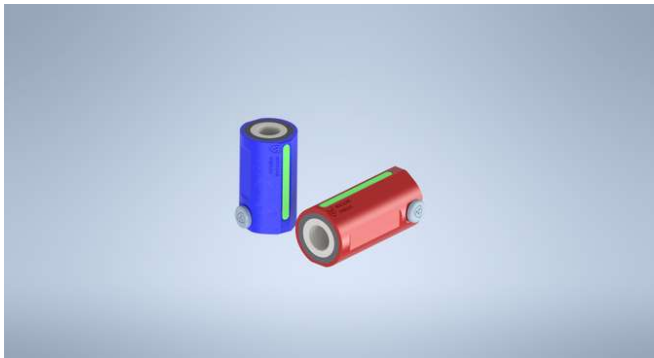


TUNGSTEN THICKNESS	LEAD GLASS THICKNESS	LEAD GLASS DENSITY	ACRYL THICKNESS
8mm	13mm	5.2 g/cm <sup>3</sup>	n/a

PET PRODUCT CODE	PET VOLUME	PET INSIDE DIMENSIONS	PET WEIGHT	PET COLORS
SS2BS1-1P	1 ml	Ø8.8x72mm	0,61KG	Green
SS2BS1-2P	1 ml	Ø8.8x76mm	0,65KG	Green
SS2BS1-3P	1 ml	Ø11.5x76mm	0,75KG	Green
SS2BS2-4P	2 ml	Ø11.5x53mm	0,53KG	Grey/Silver
SS2BS2-5P	2 ml	Ø11.5x60mm	0,60KG	Grey/Silver
SS2BS3-6P	3 ml	Ø11.5x65mm	0,64KG	Yellow/Gold
SS2BS3-7P	3 ml	Ø11.5x69mm	0,68KG	Yellow/Gold
SS2BS5-8P	5 ml	Ø15.4x61mm	0,73KG	Blue
SS2BS5-9P	5 ml	Ø15.4x65mm	0,77KG	Blue
SS2BS5-10P	5 ml	Ø15.4x68mm	0,80KG	Blue
SS2BS10-11P	10 ml	Ø18.2x75mm	1,00KG	Red
SS2BS10-12P	10 ml	Ø18.2x85mm	1,13KG	Red

# DUAL SYRINGE SHIELDS

Our Dual Syringe Shields combine 4 mm tungsten and 5 mm perspex, offering dual protection as it protects against both gamma and beta radiation. This material combination makes the shield ideal for nuclear medicine applications where shielding multiple types of radiation is essential. The shield features a narrow viewing window with a thickness of 8,8mm and a density of 5,2 g/cm<sup>3</sup>, ensuring safe and precise handling without compromising visibility. Additionally, the syringe can be securely fixed in place using the Big-Screw, providing added stability and ease of use. Designed for optimal protection and efficiency.



TUNGSTEN THICKNESS	LEAD GLASS THICKNESS	LEAD GLASS DENSITY	LEAD GLASS THICKNESS
4mm	8,8mm	5,2g/cm <sup>3</sup>	10mm

DUAL SYRINGE SHIELD PRODUCT CODE	DUAL SYRINGE SHIELD VOLUME	DUAL SYRINGE SHIELD INSIDE DIMENSIONS	DUAL SYRINGE SHIELD WEIGHT	DUAL SYRINGE SHIELD COLORS
SS23BS5-8	5 ml	Ø15,4x61mm	0,48KG	Blue
SS23BS5-9	5 ml	Ø15,4x65mm	0,51KG	Blue
SS23BS5-10	5 ml	Ø15,4x68mm	0,54KG	Blue
SS23BS10-11	10 ml	Ø18,2x75mm	0,61KG	Red
SS23BS10-12	10 ml	Ø18,2x85mm	0,73KG	Red
SS23BS20-13	20 ml	Ø 22,4x89mm	0,86KG	Orange
SS23BS20-14	20 ml	Ø 22,4x96mm	0,93KG	Orange



# BETA ACRYL SYRINGE SHIELDS

Our syringe shields with acrylic viewing window for optimal 360° visibility of the syringe and its contents. Made of 10 mm lightweight acrylic plastic. Designed for 1-10 ml syringes. Most syringe shield volumes are available in multiple internal dimensions for different syringe manufacturers. The big screw mechanism will make sure that the syringe is held in place. Available in 1ml, 2ml, 3ml, 5ml and 10ml sizes.



TUNGSTEN THICKNESS	LEAD GLASS THICKNESS	LEAD GLASS DENSITY	ACRYL THICKNESS
n/a	n/a	n/a	10mm




BETA ACRYL PRODUCT CODE	BETA ACRYL VOLUME	BETA ACRYL INSIDE DIMENSIONS	BETA ACRYL WEIGHT	BETA ACRYL COLORS
SS3BS1-1	1 ml	Ø8.8x72mm	0,058KG	n/a
SS3BS1-2	1 ml	Ø8.8x76mm	0,061KG	n/a
SS3BS1-3	1 ml	Ø11.5x76mm	0,069KG	n/a
SS3BS2-4	2 ml	Ø11.5x53mm	0,050KG	n/a
SS3BS2-5	2 ml	Ø11.5x60mm	0,056KG	n/a
SS3BS3-6	3 ml	Ø11.5x65mm	0,060KG	n/a
SS3BS3-7	3 ml	Ø11.5x69mm	0,063KG	n/a
SS3BS5-8	5 ml	Ø15.4x61mm	0,066KG	n/a
SS3BS5-9	5 ml	Ø15.4x65mm	0,069KG	n/a
SS3BS5-10	5 ml	Ø15.4x68mm	0,072KG	n/a
SS3BS10-11	10 ml	Ø18.2x75mm	0,087KG	n/a
SS3BS10-12	10 ml	Ø18.2x85mm	0,097KG	n/a

## CONTACT

# SALES & AFTERSALES

### NUCLEAR SHIELDS B.V.

Akkervoortweg 29  
5827AP Vortum-Mullem  
The Netherlands

 +31 (0)485 - 561140  
 info@nuclear-shields.com  
 www.nuclear-shields.com

### CHAMBER OF COMMERCE

EINDHOVEN

REG. NR. : 67846769

VAT : NL857196881B01

## ABOUT

# NUCLEAR SHIELDS

Nuclear Shields is a manufacturer of radiation shielding based in the Netherlands with more than 50 years of experience. The production facility is designed to meet the requirements of long term serial production and one-off custom projects. Lines of communication are short due to our small team of sales and engineering personnel. The focus on good and fast communication with the client helps us improve our services every day and makes sure the customer is satisfied.

## FACTORIES & OFFICES

# VAN MULLEKOM GROUP

2

FACTORIES

3

OFFICES

3

CONTINENTS

80+

EMPLOYEES



Protecting today & Imaging the future

[www.nuclear-shields.com](http://www.nuclear-shields.com)