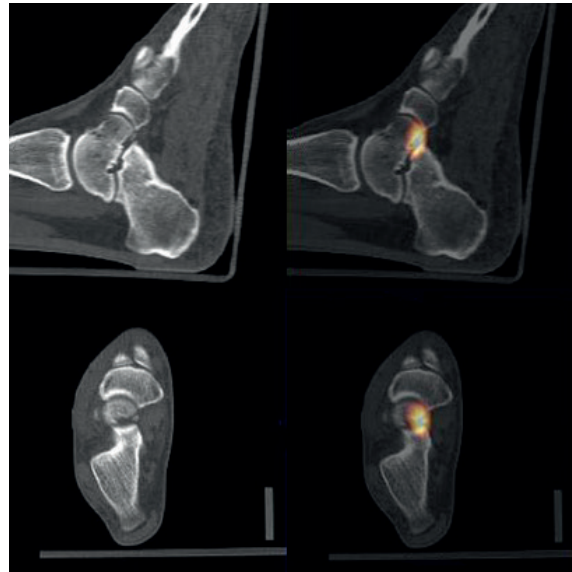


Foot support for SPECT/CT - PET/CT

Model 888.300



Images courtesy Amphia Hospital the Netherlands

Main applications

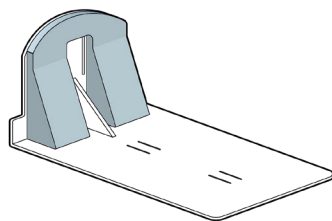
- Research
- Hospital

Product information

This support is specially designed to facilitate a comfortable position for the patient during medical procedures, while maintaining proper foot alignment. This support promotes patient comfort and is ideal for use during lengthy procedures as they contribute to better stability and reproducibility, regarding the target area.

Specifications

Overall dimensions 51 x 30 x 26 (LxWxH) in cm (approximate)



Model 888.300 + 886.113 (only use in combination)

FOR-MED is a development and manufacturing company, specialized in customized medical products for radiology, nuclear medicine and radiotherapy.

Contact info@for-med.nl | www.for-med.nl

