



COLUMBUS HEALTHCARE PRODUCTS



FOR SAFER, CLEANER, MORE COMFORTABLE MEDICAL IMAGING



ALL PRODUCTS MEET  
MR SAFE CLASSIFICATION

Columbus Healthcare Products, LLC | [Scan-Bands.com](http://Scan-Bands.com)  
577 North Fourth St. | Columbus, OH 43215 | P: 877.824.7510 | F: 614.469.3014

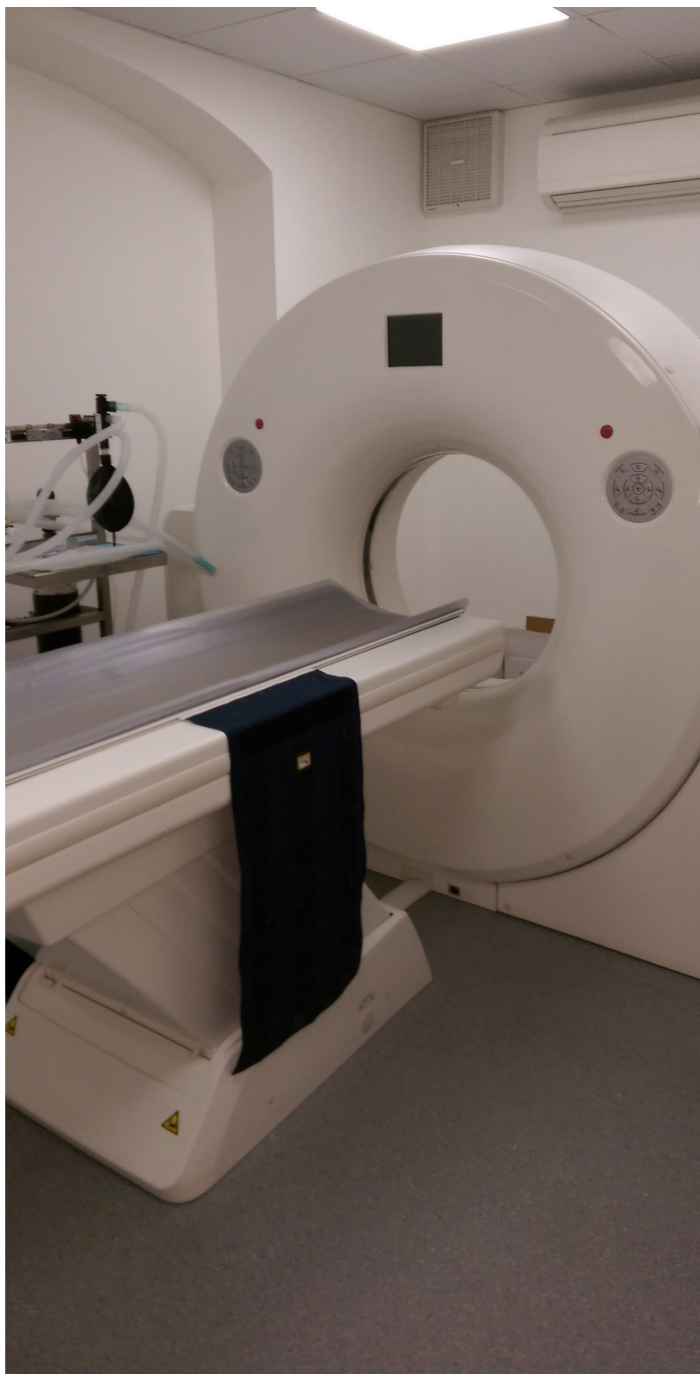


## SCAN-TRACK™ EXTERNAL CHANNEL SYSTEM

This patent-pending external channel increases a machine's positioning capabilities, providing uninterrupted travel of the Scan-Bands® down the length of the table.

- 72" Scan-Track™** - for utilizing entire space along imaging table.
- 44" Scan-Track™** - for utilizing partial space along imaging table.

- Secures patient comfortably
- Easy to install external channel on existing equipment
- Easy to reposition straps
- Radiolucent materials and latex free
- System includes easy to clean Scan-Bands®
  - Stain and fluid resistant
  - Antimicrobial material



## SCAN-BANDS® 7.5MM CORDED ATTACHMENT

Compatible only with Scan-Track™, Scan-Bands® 7.5mm Corded Attachment fits perfectly into the external channel and will glide seamlessly down the length of the table for optimal patient positioning capabilities.

- Secures patient comfortably
- Radiolucent materials that are latex free
- Easy to clean Scan-Bands®
- Stain and fluid resistant
- Antimicrobial nylon material

### 72" SCAN-TRACK™ EXTERNAL CHANNEL

Includes a choice of Scan-Bands® 2 Band Set

**SKU#** ST72-93223

D: 9"W x 32"L and 9"W x 23"L

**SKU#** ST72-93823

D: 9"W x 38"L and 9"W x 23"L

**SKU#** ST72-153223

D: 15"W x 32"L and 15"W x 23"L

**SKU#** ST72-153823

D: 15"W x 38"L and 15"W x 23"L

**SKU#** ST72-243223

D: 24"W x 32"L and 24"W x 23"L

**SKU#** ST72-243823

D: 24"W x 38"L and 24"W x 23"L

### 44" SCAN- TRACK™ EXTERNAL CHANNEL

Includes a choice of Scan-Bands® 2 Band Set

**SKU#** ST44-93223

D: 9"W x 32"L and 9"W x 23"L

**SKU#** ST44-93823

D: 9"W x 38"L and 9"W x 23"L

**SKU#** ST44-153223

D: 15"W x 32"L and 15"W x 23"L

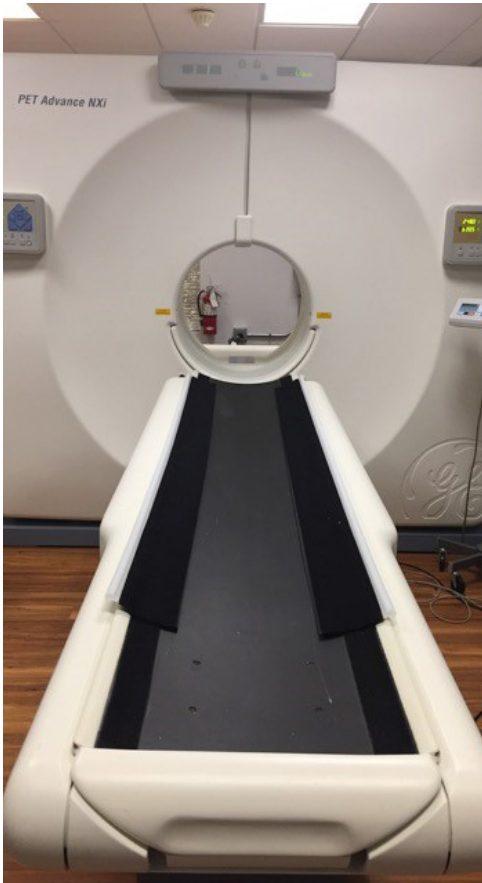
**SKU#** ST44-153823

D: 15"W x 38"L and 15"W x 23"L



Close up of Scan-Bands® installed into the track.

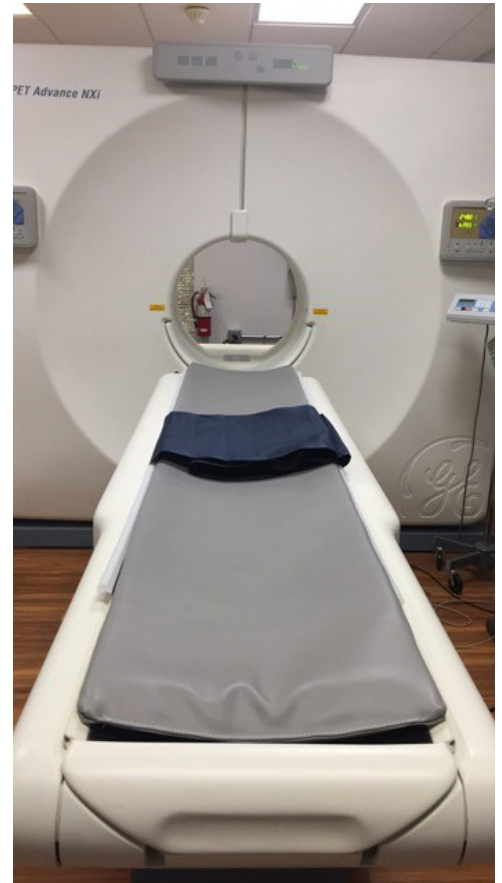
# SCAN-TRACK™ EXTERNAL CHANNEL SYSTEM INSTALLATION



**STEP 1** Install channel on table of Velcro®



**STEP 2** Table pad lays on top of channel



**STEP 3** Install Scan-Bands® in channel



Scan-Bands® with Scan-Track™

## REPLACEMENT LEFT AND RIGHT SCAN-BANDS® 2 BAND SET WITH 7.5MM CORDING FOR SCAN-TRACK™

**SKU#** SB7.5-93223  
D: 9"W x 32"L and 9"W x 23"L

**SKU#** SB7.5-93823  
D: 9"W x 38"L and 9"W x 23"L

**SKU#** SB7.5-153223  
D: 15"W x 32"L and 15"W x 23"L

**SKU#** SB7.5-153823  
D: 15"W x 38"L and 15"W x 23"L

**SKU#** SB7.5-243223  
D: 24"W x 32"L and 24"W x 23"L

**SKU#** SB7.5-243823  
D: 24"W x 38"L and 24"W x 23"L



Scan-Bands® installed into the Scan-Track™ channel.



## SCAN-BANDS® CORDED 2 BAND SET FOR OEM INTERNAL CHANNELS

Scan-Bands® with 4mm or 5mm cording attachments that utilize the existing OEM channels along the length of the imaging table.

- Secures patient comfortably
- Easy to install Scan-Bands® using existing OEM channels
- Easy to use
- Radiolucent materials that are latex free
- Easy to clean Scan-Bands®
  - Stain and fluid resistant
  - Antimicrobial nylon material

### 4MM CORDING Includes a Scan-Bands® 2 Band Set

<b>SKU#</b> SB4-93223 D: 9"W x 32"L and 9"W x 23"L	<b>SKU#</b> SB4-153823 D: 15"W x 38"L and 15"W x 23"L
<b>SKU#</b> SB4-93823 D: 9"W x 38"L and 9"W x 23"L	<b>SKU#</b> SB4-243223 D: 24"W x 32"L and 24"W x 23"L
<b>SKU#</b> SB4-153223 D: 15"W x 32"L and 15"W x 23"L	<b>SKU#</b> SB4-243823 D: 24"W x 38"L and 24"W x 23"L

### 5MM CORDING Includes a Scan-Bands® 2 Band Set

<b>SKU#</b> SB5-93223 D: 9"W x 32"L and 9"W x 23"L	<b>SKU#</b> SB5-153823 D: 15"W x 38"L and 15"W x 23"L
<b>SKU#</b> SB5-93823 D: 9"W x 38"L and 9"W x 23"L	<b>SKU#</b> SB5-243223 D: 24"W x 32"L and 24"W x 23"L
<b>SKU#</b> SB5-153223 D: 15"W x 32"L and 15"W x 23"L	<b>SKU#</b> SB5-243823 D: 24"W x 38"L and 24"W x 23"L



4,5 mm corded Scan-Bands® available in a variety of sizes

## SCAN-BANDS® UNIVERSAL

Single band patient positioning that wraps underneath the table pad and encircles the patient, attaching at the front with hook and loop fasteners.

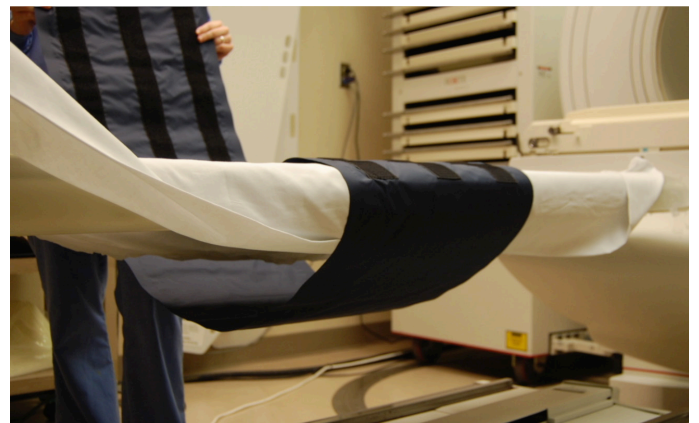
- Secures patient comfortably
- Radiolucent materials that are latex free
- Easy to clean Scan-Bands®
  - Stain and fluid resistant
  - Antimicrobial nylon material

### SCAN-BANDS® UNIVERSAL A SINGLE STRAP SCAN-BANDS®

<b>SKU#</b> SBU-672 D: 6"W x 72"L	<b>SKU#</b> SBU-996 D: 9"W x 96"L
<b>SKU#</b> SBU-680 D: 6"W x 80"L	<b>SKU#</b> SBU-1572 D: 15"W x 72"L
<b>SKU#</b> SBU-696 D: 6"W x 96"L	<b>SKU#</b> SBU-1580 D: 15"W x 80"L
<b>SKU#</b> SBU-972 D: 9"W x 72"L	<b>SKU#</b> SBU-1596 D: 15"W x 96"L
<b>SKU#</b> SBU-980 D: 9"W x 80"L	



Scan-Bands® Universal available in a variety of sizes



Secures patient with a single band.



### SCAN-BANDS® HEAD STRAP

**SKU#** SBC-31  
D: 31" Length with loop attachment for Cranial

## SCAN-BANDS® HOOK AND LOOP ATTACHMENT

Scan-Band® Hook and Loop two band set is designed to increase a technologist's positioning ability by utilizing the current table pad adhesive.

- Secures patient comfortably
- No installation required
- Radiolucent materials that are latex free
- Easy to clean Scan-Bands®
  - Stain and fluid resistant
  - Antimicrobial nylon material

**HOOK ATTACHMENT** Includes Scan-Bands® 2 Band Set Loop is on table

**SKU#** SBH-63232

D: 6"W x 32"L and 6"W x 32"L

**SKU#** SBH-153832

D: 15"W x 38"L and 15"W x 32"L

**SKU#** SBH-93232

D: 9"W x 32"L and 9"W x 32"L

**SKU#** SBH-243232

D: 24"W x 32"L and 24"W x 32"L

**SKU#** SBH-93832

D: 9"W x 38"L and 9"W x 32"L

**SKU#** SBH-243832

D: 24"W x 38"L and 24"W x 32"L

**SKU#** SBH-153232

D: 15"W x 32"L and 15"W x 32"L



Hook and Loop attachment to table

**LOOP ATTACHMENT** Includes Scan-Bands® 2 Band Set Hook is on table

**SKU#** SBL-63232

D: 6"W x 32"L and 6"W x 32"L

**SKU#** SBL-153832

D: 15"W x 38"L and 15"W x 32"L

**SKU#** SBL-93232

D: 9"W x 32"L and 9"W x 32"L

**SKU#** SBL-243232

D: 24"W x 32"L and 24"W x 32"L

**SKU#** SBL-93832

D: 9"W x 38"L and 9"W x 32"L

**SKU#** SBL-243832

D: 24"W x 38"L and 24"W x 32"L

**SKU#** SBL-153232

D: 15"W x 32"L and 15"W x 32"L

## SCAN-BANDS® EXTENDER

The Scan-Bands® Extender will allow for fluctuating patient sizes.

- Extender Band will add 22" in length to existing Scan-Bands®
- Easy to use
- Radiolucent materials that are latex free
- Easy to clean Scan-Bands®
  - Stain and fluid resistant
  - Antimicrobial nylon material

**SKU#** SBE-630

D: 6"W x 30"L

**SKU#** SBE-1530

D: 15"W x 30"L

**SKU#** SBE-930

D: 9"W x 30"L

**SKU#** SBE-2430

D: 24"W x 30"L



Available for all of Scan-Bands® widths

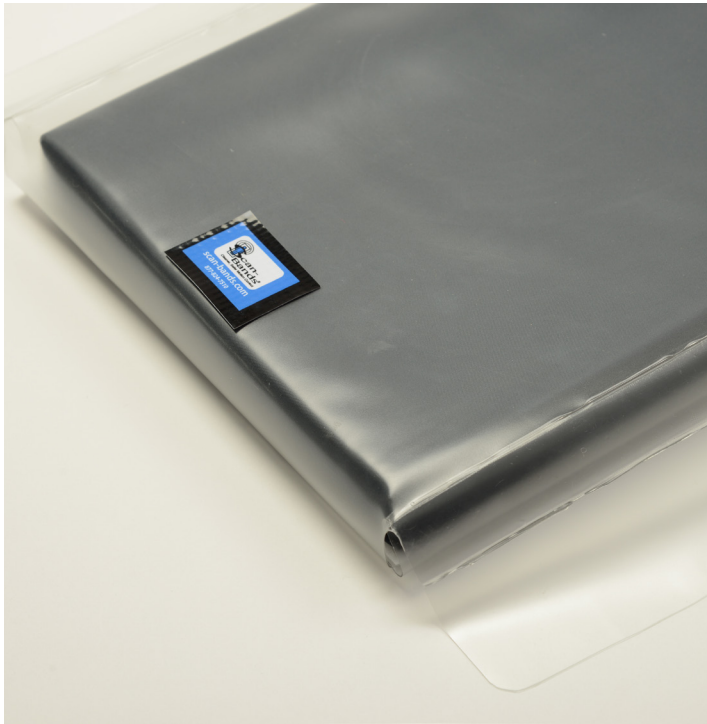


Adds 22" in length to existing Scan-Bands®

## SCAN-GUARD® PROTECTIVE COVER

The Scan-Guard® Protective Cover will provide protection against spills and damage to your expensive table pads or imaging table.

- Extends life of table pad and imaging equipment
- Easy to install over your table pad
- Allows for smoother patient transfer
- Easy to clean
- Available in 2 materials
  - Antimicrobial Blue Nylon
  - Clear Matte Vinyl



Clear Matte Vinyl Scan-Guard®



Blue Scan-Guard® on imaging table



Antimicrobial blue Scan-Guard® (underneath view)

### CLEAR MATTE VINYL SCAN-GUARD® COVER

**SKU#** SGMV-0

No flap clear matte vinyl material

**SKU#** SGMV-3

3" flap clear matte vinyl material

**SKU#** SGMV-6

6" flap clear matte vinyl material

**SKU#** SGMVXL-3

XL Cover made in 2 parts with 3" flap clear matte vinyl material

**SKU#** SGMVXL-6

XL Cover made in 2 parts with 6" flap clear matte vinyl material

### ANTIMICROBIAL BLUE SCAN-GUARD® COVER

**SKU#** SGAB-0

No flap antimicrobial blue material

**SKU#** SGAB-3

3" flap antimicrobial blue material

**SKU#** SGAB-6

6" flap antimicrobial blue material

**SKU#** SGABXL-3

XL Cover made in 2 parts with 3" flap antimicrobial blue material

**SKU#** SGABXL-6

XL Cover made in 2 parts with 6" flap antimicrobial blue material



## SCAN-SUPPORT TABLE PAD

Scan-Support table pads are high quality customized pads to fit your specific needs.

- Comfortable for patients
- Easy to clean
- Less expensive than OEM table pads
- Available in 3 types of foam
  - Standard 1" foam
  - .5" Firm foam with .5" memory foam
  - 1" memory foam
- Available in 2 materials
  - Antimicrobial blue
  - White or Tan Vinyl

### ANTIMICROBIAL BLUE MATERIAL

**SKU#** SSTP-ABL

1" depth table pad antimicrobial blue < 80"

---

**SKU#** SSTP-ABXL

1" depth table pad antimicrobial blue > 80"

---

**SKU#** SSTP-MLKMF-L

.5" depth firm foam with .5" memory foam topper in antimicrobial blue < 80.5"

---

**SKU#** SSTP-MLKMF-XL

.5" depth firm foam with .5" memory foam topper in antimicrobial blue > 80.5"

---

**SKU#** SSTP-MF-L

1" depth memory foam with antimicrobial blue < 80.5"

---

**SKU#** SSTP-MF-XL

1" depth memory foam with antimicrobial blue >80.5"

---

### WHITE OR TAN VINYL MATERIAL

**SKU#** SSTP-WVL

1" depth table pad white vinyl < 80"

---

**SKU#** SSTP-WVXL

1" depth table pad white vinyl > 80"

---

**SKU#** SSTP-MLKMF-L

.5" depth firm foam with .5" memory foam topper in white vinyl < 85"

---

**SKU#** SSTP-MLKMF-XL

.5" depth firm foam with .5" memory foam topper in white vinyl > 85"

---

**SKU#** SSTP-MF-L

1" depth memory foam with white vinyl < 80.5"

---

**SKU#** SSTP-MF-XL

1" depth memory foam with white vinyl >80.5"



Scan-Support Table pad



Blue Table pad

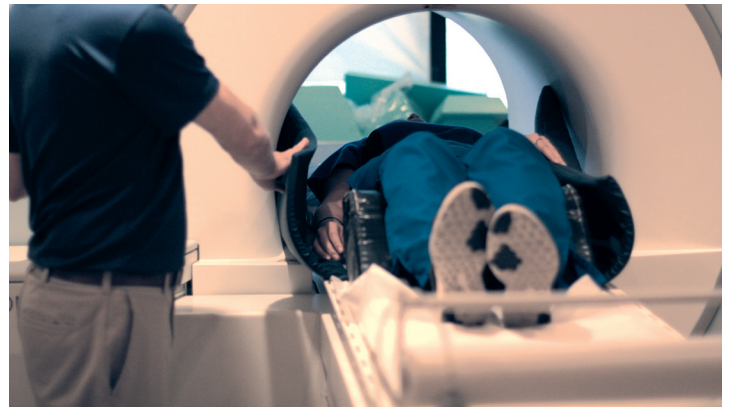


Table pad in vinyl

## SCAN-SUPPORT THERMAL BARRIER PAD SET

This thermal barrier pad set provides protection against increased temperature generated by the powerful magnets from the MR scanners.

- Removable Pad Set that slides along the bore
- Provides barrier between patient and bore
- Low shear properties
- MR safe
- Easy to clean
  - Fluid and stain resistant
  - Antimicrobial nylon material



A protective barrier against thermal burns.

### SCAN-SUPPORT LEFT AND RIGHT ANTIMICROBIAL BLUE MATERIAL THERMAL BARRIER PADS

**SKU#** SSTPFB-1236.6

D: (2) 12"W x 36"L x .625"D w/ fire barrier

**SKU#** SSTP-1236.6

D: (2) 12"W x 36"L x .625"D W/O fire barrier

**SKU#** SSTPFB-618.6

D: (2) 6"W x 18"L x .625"D w/ fire barrier

**SKU#** SSTP-618.6

D: (2) 6"W x 18"L x .625"D W/O fire barrier



Thermal Barrier Pads

## FOAM POSITIONERS

The foam positioners assist with comfort reducing the interface pressure between the surface and bony prominence of the patient.

- Comfortable for patient
- Low Shear properties
- MR safe
- Easy to clean
  - Fluid and stain resistant
  - Antimicrobial nylon material

### A. SPINAL SUPPORT

**SKU#** SSW-2477

D: 24"L x 7"W x 7"H

### D. LONGER TRIANGLE WEDGES

**SKU#** SSW-1052

D: 10"L x 5"W x 2"H

### B. SQUARE STYLE SPONGE

**SKU#** SSW-14142

D: 14"L x 14"W x 2"H

### E. KNEE WEDGE

**SKU#** SSW-16156

D: 16"L x 15"W x 6"H

### C. SMALL TRIANGLE WEDGES

**SKU#** SSW-542

D: 5"L x 4"W x 2"H

### F. CARDIAC SUPPORT

**SKU#** SSW-28168

D: 28"L x 16"W x 8"H



Knee wedge and small triangle wedge

