

QA Solutions for Dental X-ray



INDEPENDENT X-RAY
QUALITY ASSURANCE



www.rtigroup.com

Let's work together to ensure X-Ray safety and quality



We are a world-leading manufacturer of Quality Assurance (QA) solutions.

In 1982 we released the DIGI-X, the first X-ray QA system for diagnostic radiology. Since then, innovation has been at the heart of our corporate philosophy, and we have pioneered many QA procedures.

We continue to invest heavily in R&D to push forward the very edge of X-ray QA, across all modalities.

Longer and more active lives, combined with a string of new examination techniques, have made diagnostic radiology the most widely used medical imaging technology.

Diagnostic imaging growth can be seen throughout the healthcare sector, including orthopedic and vascular imaging, plus full-body scanning. This will be a continuing trend, thanks to a shift in focus to more advanced healthcare globally.

As X-ray examinations increase, there is a higher risk of patient and staff exposure to levels of X-ray radiation that could result in negative health implications.

As a long-standing member of, among others, IEC, AAPM, and MITA, we participate in work to research, develop, and evolve diagnostic radiology standards.

A key global goal is also to educate our customers and partners, by sharing our deep knowledge of X-ray QA best-practice to protect patients and staff in an ever more complex operational environment.

Today, we are represented globally by the offices listed below, as well as by 100 distributors worldwide.



DIGI-X is a precise instrument with microprocessor for non-invasive measurement and calculation of kVp, exposure time, beam quality, mAS-value and digital storage of the exposure curve.

RTI Group Headquarters
Flöjelbergsgatan 8C
SE-431 37 Mölndal, SWEDEN
+ 46 (0) 31 746 36 27
sales@rtigroup.com

RTI Group North America
33 Jacksonville Road, Bldg. 1
Towaco, NJ 07082, USA
+1 800-222-7537
sales.us@rtigroup.com

RTI Group APAC
3791 Jalan Bukit Mera
#08-10 E-Centre @ Redhill
SINGAPORE 159471
sales.apac@rtigroup.com



Industry-leading QA solutions for dental X-ray

From Intraoral to CBCT measurement, we are extending our lead in solutions for dental.


Our Piranha and Cobia dental Quality Assurance (QA) kits combine intuitively with Ocean Next™ software to provide features for routine inspection, through to highly customizable QA programs for deep analysis and record keeping, on any application you wish.

We offer complete, holistic solutions for Intraoral, Cone Beam CT, and Panoramic dental X-ray machines.

With the growth in dental and maxillofacial X-ray units, it pays to choose a QA provider who can evolve with your needs, helping you to maximize X-ray quality and compliance across a wider range of equipment brands, models, and technologies than ever before.

A selection of our industry-leading, dental solutions is listed in this brochure.

Our complete portfolio is available at www.rtigroup.com, or contact one of our Sales teams for more information.

A woman with dark hair, wearing a yellow sleeveless shirt, is standing in a classroom or office setting. She is smiling and looking towards the camera. The background shows a desk with a laptop and some papers.

RTI Academy

Get the very best from our solutions by joining the RTI Academy courses. Develop new X-ray QA skills through our online, video, and classroom-based product and application training.

For more information, e-mail academy@rtigroup.com or visit www.rtigroup.com/training/.

For Intraoral, CBCT, and Panoramic X-ray systems



Piranha DENTAL

The Piranha DENTAL is your number one choice when you want a multifunction dental X-ray service and maintenance solution for complete QA. It offers an affordable solution for Dental QA, providing the best practices for Intraoral, Panoramic, and CBCT.

Measures kVp, Time, HVL, Total Filtration, Dose, Dose rate, and presents Waveform. With its external detector input, it can also measure DAP, mAs, light, CTDI, and more!

Art. No **9729255-00**

RTI Scatter Probe

A leakage and scatter detector in one!

Our revolutionary solid-state detector - launched at RSNA Chicago 2020 - for leakage and scatter detection in X-ray environments.

The RTI Scatter Probe's unique design - two separate detector areas of 10 cm² and 100 cm² - fulfills current regulations and standards for X-ray leakage and scatter measurements.

Stand on a table, use by hand, or mount on the included tripod, the RTI Scatter Probe is quick, simple, and easy to position.

Art. No **9731001-00**



Cobia DENTAL

The Cobia DENTAL is a simple-to-use meter for a routine inspection of Intraoral and CBCT X-ray equipment in dental clinics. Especially suitable for acceptance tests, constancy tests, and routine quality control. Measurements displayed on a clear and rotatable color screen.

Measures kVp, Time, HVL, Total Filtration, Dose, Dose rate, and presents Waveform. With the new detector input, it can also measure DAP, mAs, light, CTDI, and more!

Art. No. **9764003-00**



For Intraoral, CBCT, and Panoramic X-ray systems



Cobia Vertical Holder

The Cobia Vertical Holder is designed for attaching the Cobia to vertical surfaces like a wall bucky or Cone Beam X-ray units. The holder comes with an adjustable strap with a suction cup for safe mounting quality control.



Piranha Panoramic Holder

The Piranha Panoramic Holder/Vertical Holder v.4 is designed for attaching the Piranha meter to dental panoramic equipment or vertical mounting. It can be mounted with an adjustable strap or magnets.

Art. No

9744011-00

Art. No

9744007-00

Ocean Next™

The new power in dental X-ray QA software!

A swift, easy-to-use application for routine controls, or a customized application with workflow, automatic tests, and traceability. Ocean Next™ is compliant with all of our Piranha and Cobia meters and has three different license levels of Quick, Advantage, and Professional. RTI Academy software training is available for all users.



DAP Chamber

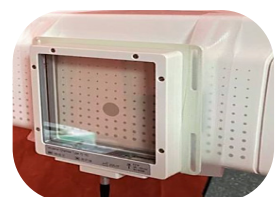
The DAP Chamber is the perfect tool for field calibration of orthodontic X-ray equipment. You can measure with just one click, ensuring your quality control process runs safely and smoothly. Available in two sizes (mm).

86 x 86 mm

147 x 147 mm

Art. No 9705070-00

Art. No 9705060-00



Ocean Next™ software for dental X-ray



The importance of dedicated software applications to conduct professional QA is growing. Microsoft Excel is flexible but not enough to meet the growing demands for traceability, compliance, and efficiency.

By using Ocean Next™ software, you can plan the measurements in advance, create checklists, add information as a pop-up window for a specific exposure, and include instructions to simplify the work for you and your co-workers using a streamlined user interface.

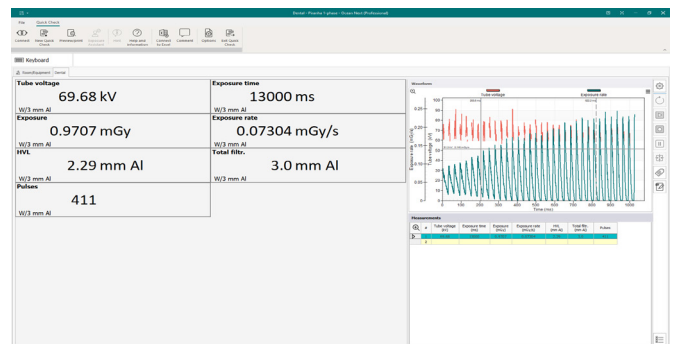
Choose from three different license levels: Quick, Advantage, and Professional.

Quick: for swift QA

Start measuring within seconds. The application detects what instrument and probes you have connected to assist you the best way possible – just Plug n Play!

The interface adapts, and all the measured parameters are displayed on one screen.

The results and waveforms can be retained in the database for later review and compiled in a report.



Advantage: for steamlined QA measurements

For more advanced QA measurements than Quick, the Advantage license enables customization of templates to suit your needs. Predefined workflows, automation of steps, and graphs.

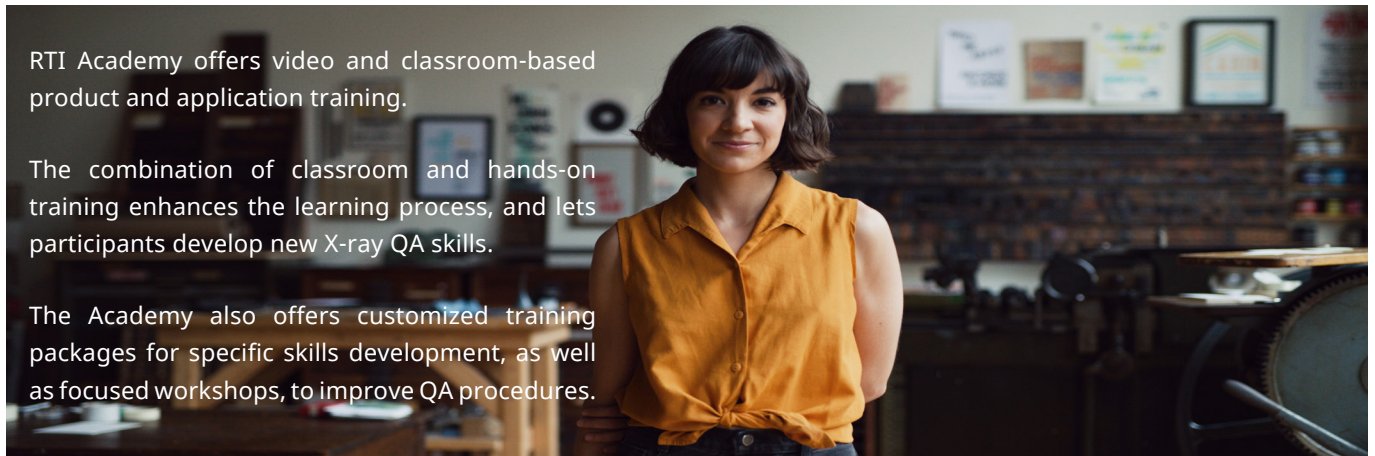
In Studio View, you can design single-page templates (including analysis and checklists) and important reports, e.g. with your own logo and layout.

Professional: complete QA system for superior efficiency and compliance

For trend analysis and full traceability of your measurements. You can build a holistic solution for your X-ray QA, by storing your measurements in a searchable database structured to your needs.

The archived measurements are available for quick and intuitive retrieval.

RTI Academy



RTI Academy offers video and classroom-based product and application training.

The combination of classroom and hands-on training enhances the learning process, and lets participants develop new X-ray QA skills.

The Academy also offers customized training packages for specific skills development, as well as focused workshops, to improve QA procedures.

Scheduled training courses and sessions are held at all RTI locations with access to X-ray labs and experienced staff. However, sometimes it is more efficient to run the training at the customer site.

Classroom training courses

Location: RTI Group Headquarters, Mölndal, Sweden. Access to onsite staff and facilities.

Piranha Basic Training

One-day training for first-time users to get familiar with their Piranha meter. The theory is interlaced with hands-on in the lab. Ocean Next™ software Basic Training is included.

Cobia Basic Training

One-day training for first-time users to get familiar with their Cobia meter. The theory is interlaced with hands-on in the X-ray lab. Ocean Next™ software Basic Training is included.

Ocean Next™ Basic Training

Half-day training for beginners. An overview of how Ocean Next™ software can help in their QA processes. Theory and hands-on in the X-ray lab.

Ocean Next™ Advanced Training

Two-day theoretical and practical training in Ocean Next™ software template design. As part of the training, the templates are tested in the X-ray lab for realistic evaluation.



Contact

Erik Wikström - Manager Training
Phone: +46 (0) 70 848 70 00
E-mail: academy@rtigroup.com



Online

Visit www.rtigroup.com/training/ to find out more about the RTI Academy.

Service & Warranty

Since 1982, when we released the DIGI-X system, we have been delivering world-leading X-ray QA solutions of meters, probes, and software.

Our calibration labs, at offices in Mölndal (Sweden) and Towaco (NJ, USA), are designed to serve users of RTI products around the globe with a traceable, reliable, and convenient service. All services are performed by our trained, in-house personnel and our calibrations are traceable to international standards and with true adjustments.

We are the only non-invasive X-ray QA test equipment manufacturer that includes all products in its ISO 17025 accreditation scope.

Two-year calibration cycle

Due to the high reliability of RTI products, we recommend a two-year calibration cycle. To make it convenient for you, we offer to keep track of when your solution needs to be sent in for calibration. We will send you a reminder two months before your calibration is due, giving you time to plan and schedule your work.



We are proud of our ISO/IEC 17025:2017 accreditation – “General requirements for the competence of testing and calibration laboratories”. This is a guarantee that we comply with obligations under the international standards, and that we have a quality management system in place to assure that the calibrations we perform are of the highest quality - each and every time.



The RTI conditional Extended Warranty program, for the Piranha and Cobia, gives you up to ten-year warranty. Each instrument comes with a two-year warranty. By joining the Extended Warranty Program, you can increase your warranty two years at a time – up to ten years.

A reliable and dependable service

At our accredited calibration labs, your solution is always in the best hands! Our trained Service Engineers take the very best care of your meter(s) and probe(s), making sure they perform better for longer. As an owner and user of any RTI solution, you are guaranteed to always receive prompt and professional support if and when required.

RTI Group Headquarters

Flöjelbergsgatan 8C
SE-431 37 Mölndal
SWEDEN

service@rtigroup.com

RTI Group North America

33 Jacksonville Road, Bldg. 1
Towaco, NJ 07082
USA

service.us@rtigroup.com



c/o RTI

What we do matters. To patients. To professionals. To us.
It is more than algorithms, technology, and design.
It is about setting the standard for quality assurance
of X-ray imaging.

Copyright © RTI Group, QA Solutions for Dental X-ray 2021.10



INDEPENDENT X-RAY
QUALITY ASSURANCE