

Accurate Diagnostics **for** Busy Healthcare



Magnetic resonance

**UNMATCHED
SOLUTIONS
FOR QUALITY
CONTROL**





Magnetic resonance

Quality Control kits

Powered by:

DIAGNOMATIC



We have prepared several QA / QC kits consisting of must-have phantoms, accessories and software that you can use in different situations depending on your requirements.

These can be your go-to selections when you are not sure what to choose for tests of a given modality.

We have introduced gradation of kits depending on the purpose and level of sophistication required:

BASIC: these sets are meant for constancy level testing purposes - tests that can be done practically by everyone who can use a diagnostic device

PRO: sets meant for acceptance and specialized testing - performed by specialized personnel, for example a medical physicist



Pro-MRI BASIC kit

09-001



Powered by:

DIAGNOMATIC

This kit is a versatile set of phantoms and software for carrying out constancy and acceptance tests of magnetic resonance units. Thanks to the Pro-Control.online subscription, all tests can be quickly and effortlessly automatically analysed online and with the desktop app.

Standard kit configuration:

- Pro-MRI (09-101)
- Pro-MRI - detachable spirit level (09-104)
- Diagnomatic BASIC annual subscription
- carrying case with dedicated foam inlay

The kit can be used to measure:

- geometric distortion
- spatial resolution
- slice thickness and position
- interslice gap
- T1 and T2 values
- image bandwidth
- low contrast detectability
- image uniformity
- Signal-to-Noise Ratio (SNR)
- physical and electronic slice offset
- point of reference
- bandwidth: water-fat shift

Product features:

- complies with:
 - ACR MRI Accreditation Program
 - IPEM Report 80 "Quality Control in MRI", 1998
 - AAPM Rep. 28 "Quality Assurance methods & phantoms for MRI", 1990
 - AAPM Rep. 34 "Acceptance testing of MRI systems", 1992
 - AAPM Rep. 100 "Acceptance & Quality Assurance procedures for MRI facilities", 2010
- CE certified
- the Manual provides detailed guidelines for carrying out each test, results assessment and registration



Magnetic resonance

Phantoms



Pro-MRI

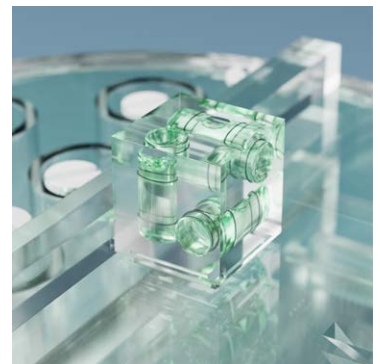
- 09-103 optional 6 removable vials for test samples - replacing the "T1 and T2 sample vials", includes 6 additional vials (12 in total)
- 09-104 optional detachable 3-axis spirit level
- 09-102 optional heavy duty carrying case
- 09-101

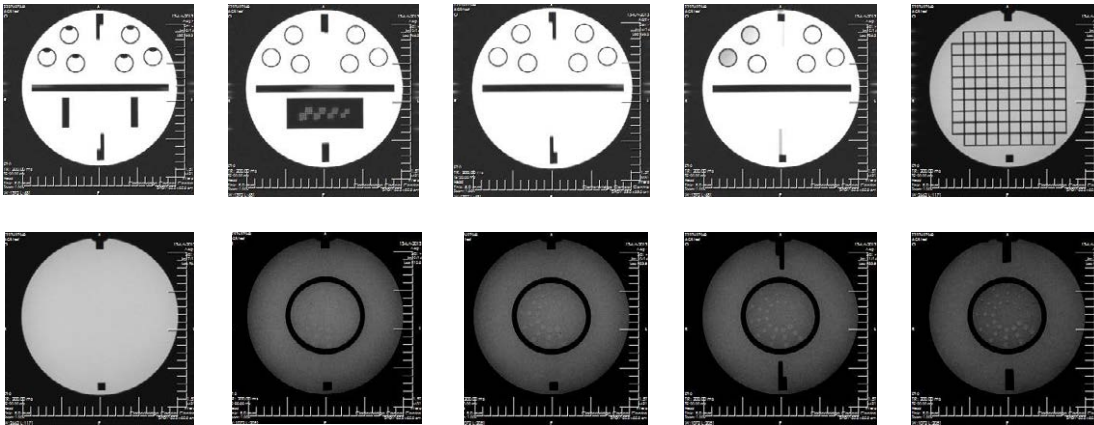


Phantom for comprehensive evaluation of critical imaging parameters of magnetic resonance imaging (MRI) in a time efficient manner. The phantom can be used for the measurement of absolute values for calibration purposes. However, its design is optimized for time efficient daily quality assurance too.

It can be used to measure:

- geometric distortion
- spatial resolution
- slice thickness and position
- interslice Gap
- T1 and T2 values
- image bandwidth
- low contrast detectability
- image uniformity
- signal-to-noise ratio (SNR)
- physical and electronic slice offset
- point of reference
- bandwidth: water-fat shift





Technical data (can be modified to customer specifications):

- outside cylinder diameter: 220 mm (180 mm)
- outside cylinder height: 150 mm
- inside cylinder diameter: 204 mm (173 mm)
- inside cylinder height: 130 mm
- filled with 10 mmol nickel chloride solution containing
- sodium chloride 75 mmol
- T1 and T2 sample vials
 - 6 cylindrical vials Ø19 x 41 mm
 - refillable from outside
 - by default filled with 20 mmol nickel chloride and 15 mmol sodium chloride solution
- resolution insert:
 - four matrices of holes, diameters: 0.8, 0.9, 1.0 and 1.1 mm
 - spaces between the holes are equal to hole diameters
 - two small containers with water and fat for water-fat shift evaluation
- slice thickness insert:
 - 180 x 46 x 10 mm PMMA plate
 - 1 mm wide and 5mm deep counter-descending slits on both sides
 - slits form two ramps descending at 1:10 geometric distortion insert:
 - 10 x 10 array of squares
 - 148 mm on a side
 - 10 mm thick
- low contrast insert:
 - 4 polycarbonate discs 0.05, 0.1, 0.15 and 0.2 mm in thickness
 - partial volume contribution of these sheets and filling solution produce contrasts: 1.4, 2.5, 3.6 and 5.1%
 - each disc contains 12 groups of 3 holes arranged in spokes
 - each spoke has the same diameter
 - diameters range from 7.0 to 1.5 mm (0.5 mm step)
- four sets of paired 45° wedges are located on both sides of the phantom. The lower pairs are 30 x 30 mm, and the upper ones are 40 x 40 mm. The distance between intersection points of the lower and upper pairs is 90 mm
- optional 6 removable vials for test samples - replacing the "T1 and T2 sample vials", includes 6 additional vials (in 12 total) (09-103)
- optional detachable 3-axis spirit level (09-104)
- optional heavy duty carrying case (09-102)

Product features:

- Complies with:
 - ACR MRI Accreditation Program
 - IPEM Report 80 "Quality Control in MRI", 1998
 - AAPM Rep. 28 "Quality Assurance methods & phantoms for MRI", 1990
 - AAPM Rep. 34 "Acceptance testing of MRI systems", 1992
 - AAPM Rep. 100 "Acceptance & Quality Assurance procedures for MRI facilities", 2010
- CE certified
- the Manual provides detailed guidelines for carrying out each test, results assessment and registration

Pro-MRI Agar

09-202



This stability (agar) phantom consists of a cylindrical phantom and agar material inside. Using this phantom a Signal to Noise Ratio, Signal Fluctuation to Noise Ratio, drift, and other imaging measures over a 100-volume or 200-volume fMRI scan can be performed. The agar phantom has characteristics similar to the T2 measures of a human head, but provides no change in signal. The T1 and T2 characteristics of the agar phantom at 3T are ~900 ms T1 and 30 ms T2.

Technical data (can be modified to customer specifications):

- overall cylinder dimensions: 140 mm in diameter, 150 mm in height
- cylinder made of PMMA
- filled with agar gel with T1 and T2 characteristic at 3T of ~900 ms T1 and 30 ms T2.
- optional carrying case (09-102)

Product features:

- Complies with:
 - ACR MRI Accreditation Program
 - IPEM Report 80 "Quality Control in MRI", 1998
 - AAPM Rep. 28 "Quality Assurance methods & phantoms for MRI", 1990
 - AAPM Rep. 34 "Acceptance testing of MRI systems", 1992
 - AAPM Rep. 100 "Acceptance & Quality Assurance procedures for MRI facilities", 2010
- CE certified
- the Manual provides detailed guidelines for carrying out each test, results assessment and registration



Pro-MRI SpineRect

09-201



Rectangular MRI phantom simulating attenuation of the human spine.

Technical data (can be modified to customer specifications):

- inner dimensions: 372 x 150 x 148 mm
- made of PMMA
- filled with nickel chloride and sodium chloride solution
- markings on the surface to show middle axes of the phantom
- carrying handles for easy transportation

Product features:

- Complies with:
 - ACR MRI Accreditation Program
 - IPEM Report 80 "Quality Control in MRI", 1998
 - AAPM Rep. 28 "Quality Assurance methods & phantoms for MRI", 1990
 - AAPM Rep. 34 "Acceptance testing of MRI systems", 1992
 - AAPM Rep. 100 "Acceptance & Quality Assurance procedures for MRI facilities", 2010
- CE certified
- the Manual provides detailed guidelines for carrying out each test, results assessment and registration



World Headquarters

Kwiatowa 43A Street
22-105 Okszków, Poland
E-mail: contact@pro-project.pl
Phone: +48 668 024 874, +48 606 161 554

US office

8400 West Sunset Road
Black Fire Innovation Center, Suite 300
Las Vegas, NV 89113, USA
E-mail: contact.us@pro-project.pl
Phone: 786 757 0514

Distributor

